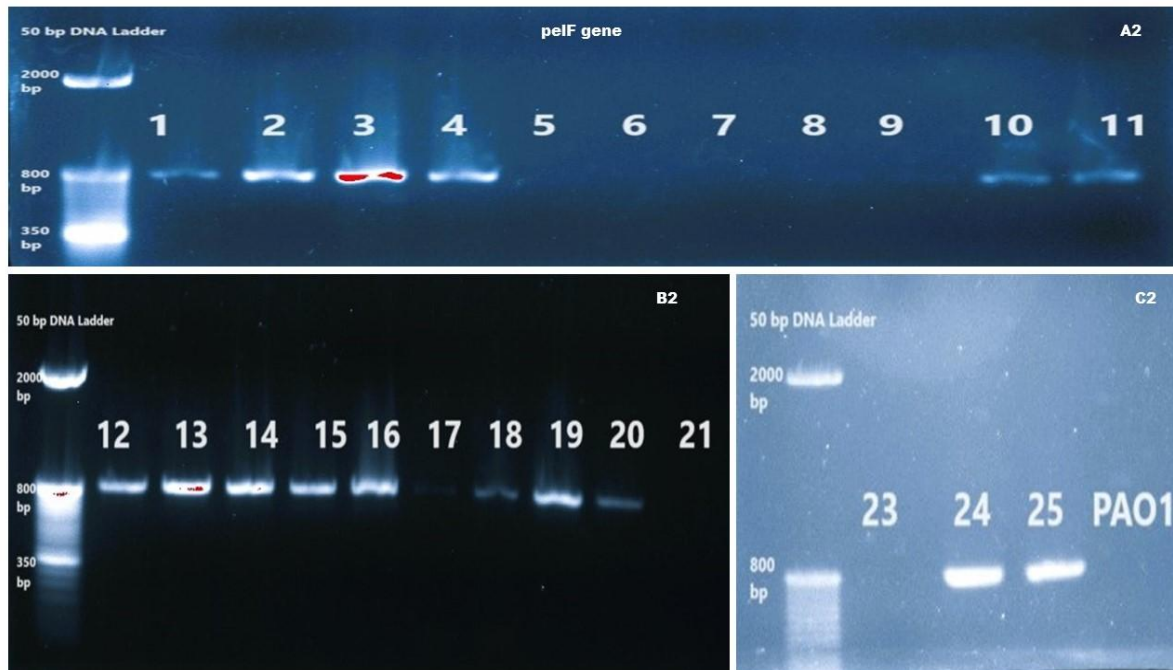
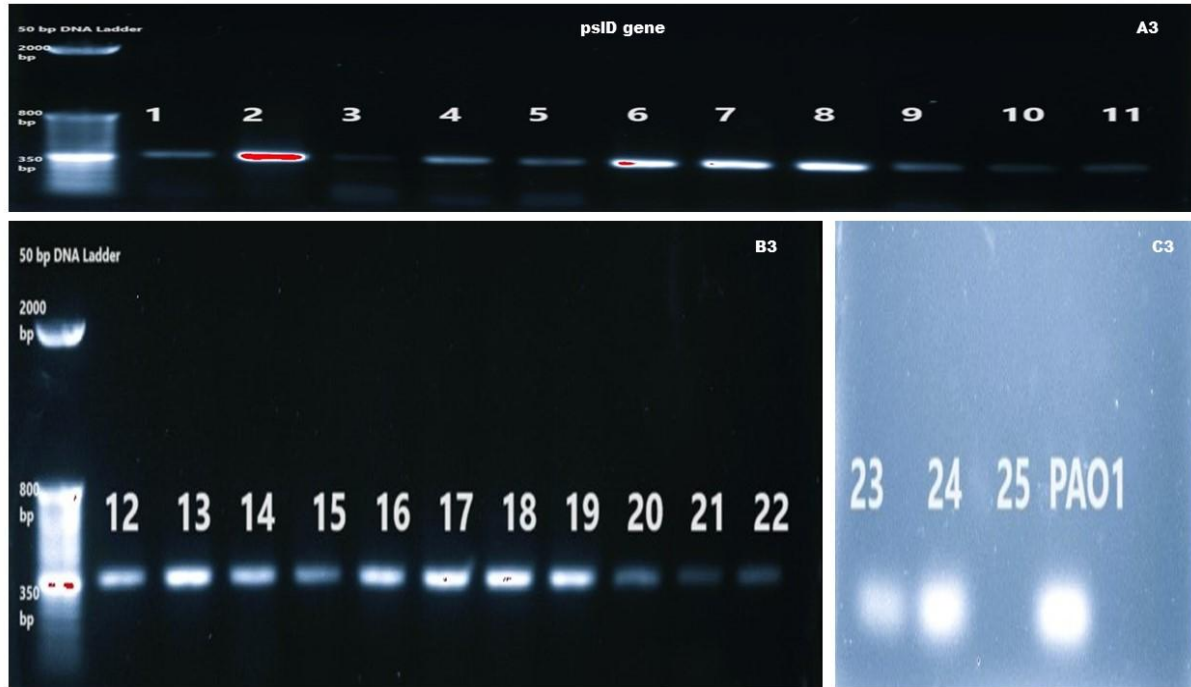


Appendix 1. Screening of *algD* gene using PCR technique. In A1, B1 and C1, *P. aeruginosa* clinical isolates represent as number (1-25), In C1, PAO1 represents the wild type *P. aeruginosa* strain.



Appendix 2. Screening of *pelF* gene using PCR technique. In A2, B2 and C2, *P. aeruginosa* clinical isolates represent as number (1-25), In C2, PAO1 represents the wild type *P. aeruginosa* strain.



Appendix 3. Screening of *pslD* gene using PCR technique. In A3, B3 and C3, *P. aeruginosa* clinical isolates represent as number (1-25), In C3, PA01 represents the wild type *P. aeruginosa* strain.